

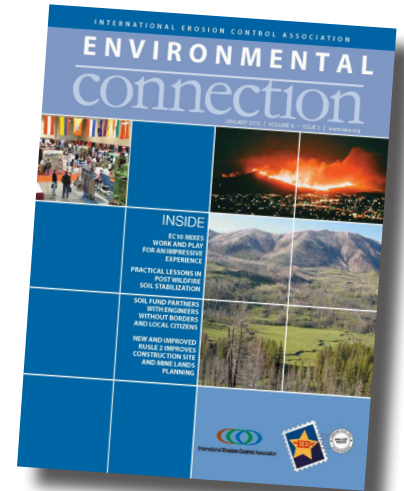


# Environmental Connection Magazine

**Get your message in front of the industry's decision makers!**

*Environmental Connection* magazine features industry-leading content from thought leaders from around the globe. All of the technical articles in *Environmental Connection* undergo a peer review to ensure the quality and accuracy of the content. This process sets *Environmental Connection* apart from many other industry publications and makes it a valuable part of IECA member's benefits.

Placing your company's ad in *Environmental Connection* puts your message in front of the key decision makers of the erosion and sediment control industry. IECA members represent nearly 40 countries and 17 fields of professional practice.



## Advertising Close Dates

April	July	October	January 2012
2/28/2011	5/13/2011	8/26/2011	12/2/2011

Bonus Distribution  
at EC12

## Scheduled Editorial

Executive Director's Message · Tech Talk by Julie Etra, MS, CPESC · IECA Member Profile  
Business Matters by Judy Guido · Research Briefs by Rich McLaughlin, PhD

In addition to the regularly appearing editorials, IECA features peer-reviewed articles offering fresh perspective on the erosion and sediment control industry's hottest topics.

- *Connect to more than 2,800 members worldwide*
- *Show your support for the world's oldest and largest erosion control association*
- *Increase your exposure with frequency discounts*



## Contact

Rich Harter, CMP  
International Erosion Control Association  
Phone: 800-455-4322; 303-640-7554  
Fax: 866-308-3087  
E-mail: rich@ieca.org



International Erosion Control Association



## Print Advertising Specs (Magazine - 8.375" x 10.875") and Pricing

Size	Width	Height
DPS Bleed	17"	11.125"
DPS Trim	16.5"	10.875"
DPS Live Area	15.417"	9.5"
Full Page Bleed	8.625"	11.125"
Full Page Trim	8.375"	10.875"
Full Page Live Area	7"	9.5"
2/3 Hz.	7"	6.333"
2/3 Vt.	4.583"	9.5"
1/2 Hz.	7"	4.583"
1/2 Vt.	4.583"	7"
1/2 Long Vt.	3.333"	9.5"
1/3 Hz.	7"	3"
1/3 Vt.	2.166"	9.5"
1/3 Sq.	4.583"	4.583"
1/4 Hz.	4.583"	3.333"
1/4 Vt.	3.333"	4.583"
1/6 Hz.	4.583"	2.166"
1/6 Vt.	2.166"	4.583"
1/8 Hz.	3.333"	2.166"
1/8 Vt.	2.166"	3.333"

**ARTWORK REQUIREMENTS:** All digital color and greyscale artwork must be supplied at 300 dpi. Line art must be supplied at 600 dpi. High-res PDF, EPS, TIFF and JPEG files are accepted. **IMAGES FROM THE WEB ARE NOT SUITABLE FOR PRINTING.** All color artwork must be in CMYK mode; RGB mode artwork is not accepted and if supplied will be converted to CMYK mode, which will result in a color shift. All screen and printer fonts as well as linked images must be supplied if not embedded in the file. *E-mail artwork to Rich Harter at rich@ieca.org.*

Size	Member Rates	Non-Member Rates
Double Page Spread	\$2,150	\$2,350
Outside Back Cover	\$1,850	\$2,050
Inside Front or Back Cover	\$1,495	\$1,695
Full Page	\$1,150	\$1,350
2/3 Page	\$875	\$1,075
1/2 Page	\$695	\$895
1/3 Page	\$575	\$775
1/4 Page	\$450	\$650
1/6 Page	\$375	\$575
1/8 Page	\$295	\$495

- » Two issue discount 10%
- » All pricing reflects full color rates

